

DIAG software environment

Software for receiving and evaluating industrial data

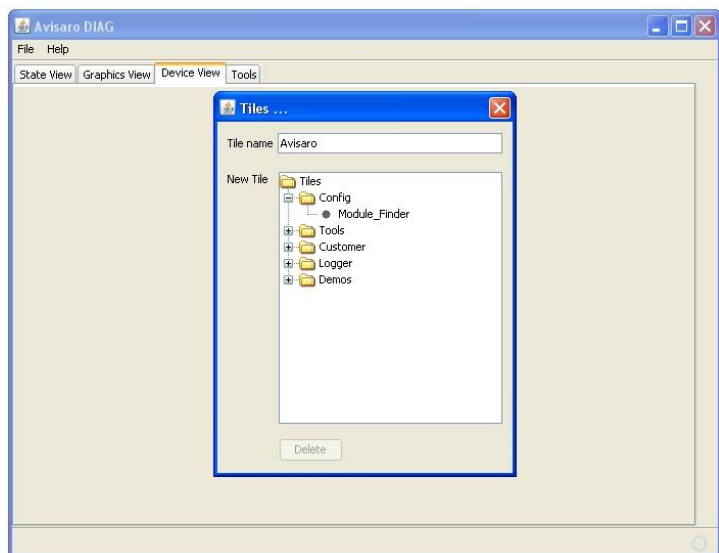
- Modular "tile" offers tailored analysis
- Assistance with the configuration of the modules
- Custom tiles are possible

Device view: Select features

The DIAG software environment is divided into 4 areas:

1. **State view:** This is the normal user view. Here the selected functions are grouped together open
2. **Graphics view:** Here details are displayed. For example a function provides a graphical history, he is shown here
3. **Device view:** Here are functions of new tiles added, configured or removed again.
4. **Toos:** This determines additional read are represented - depending on the enabled tile

In the 'device view' be the desired functionality of "tiles" added. The tiles configuration options of the function show in the device view. Provide a function such as the possibility to establish a TCP connection, then the corresponding parameter be entered here.

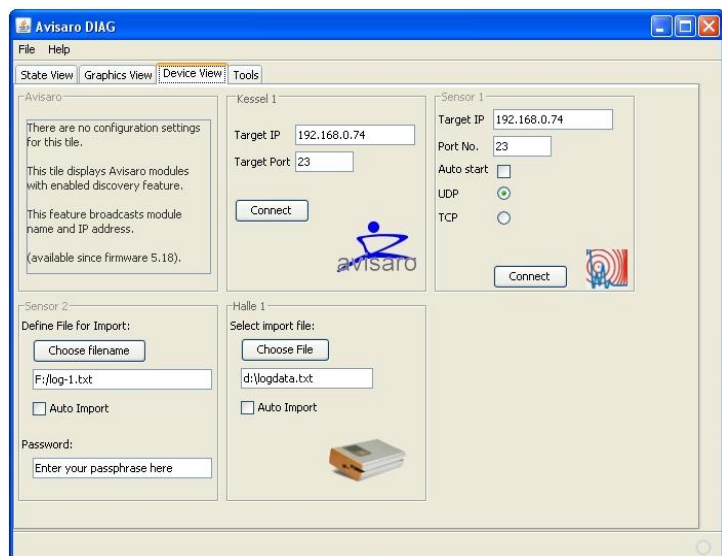


To set up a new function, select the tab 'Device View'. By a double click in the blank surface they get display the selection of possible tiles.

Specify a name and select the desired tile.

Up to 6 tiles can be - added with the functions of your choice.

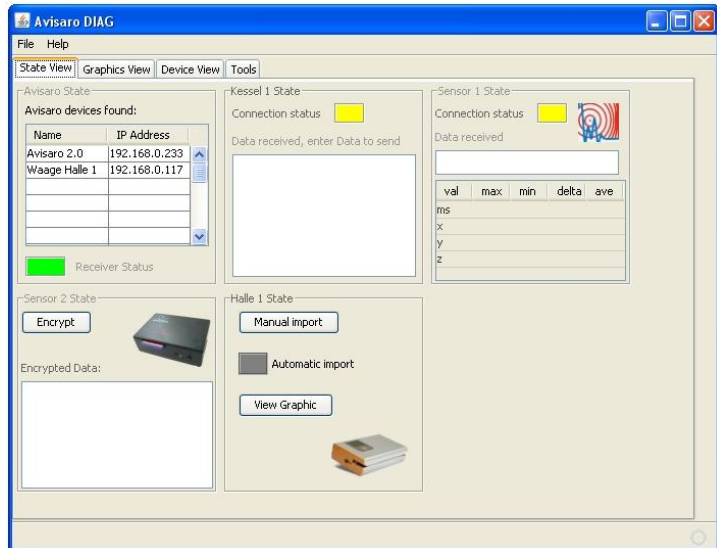
The tiles are stored and displayed the next time the DIAG software again.



State view: use functions

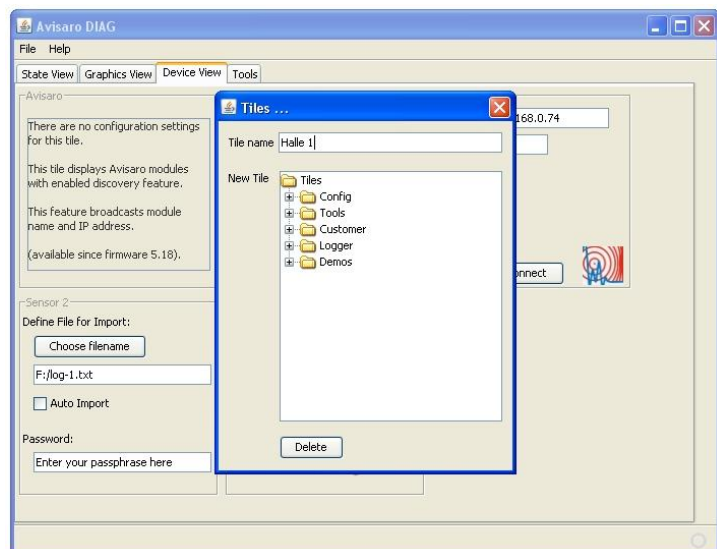
The "State view" shows the user view, which is important during normal operation. Each tile displays essential information.

Some tiles provides the ability to view of detailed information - such as graphical representation or large tables. This will then press the 'Detail' button in the respective tile in the "graphics view" tab displayed.



Device view: again delete functions

To delete a tile again, is in the 'device view' by a double click on the tile corresponding select box called. There may then the tile be renamed or deleted also.



Tile: Module Finder

Automatic finding of Avisaro modules in the network

- Shows IP modules address and name of Avisaro in the network
- Allows the finding of modules that use DHCP
- Help with the "one button" Setup with WPS (Wi-Fi Protected Setup)
- Easy administration of large installations

State view

The module Finder shows all Avisaro to modules in the network that have turned on the sending out of corresponding beacons (available from firmware vx5. 18 / May 2011). The name and the IP shows address of the module.

This function is particularly useful if the modules automatically - established example of WPS (automatic assigning of the WiFi settings) and DHCP (automatically assign of IP settings).

In this example, two wireless devices were found - now for example is named "Scales in Hall 1" and is to reach under the IP "192.168.0.117".



Device view

This tile must be configured.



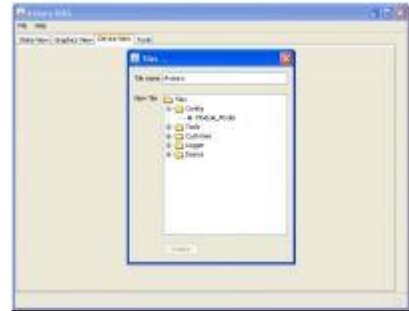
Tile: TCP Terminal light

Simple TCP terminal program

- Displays TCP data stream as ASCII characters
- Performance inspection or setting up modules

Choose the tile:

1. Go to 'Device View'. Double click on the blank area, a window opens to select the tile.
2. Enter a name for the tile (e.g. TCP WLAN) in the field
3. Choose the folder 'tools' and select 'TCPTermLight'



Establish a TCP Connection

Enter the port number and the IP address of the Avisaro device. Port number must be identical to the port that is listed on the administration web site of Avisaro device under 'Scripting'.



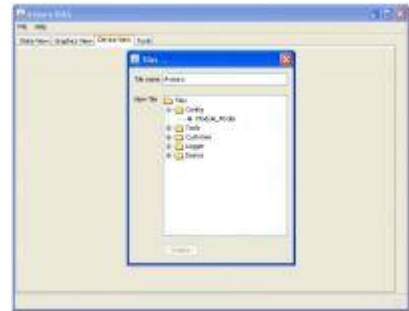
Tile: CAN Monitor

Simple CAN communication program

- Build up TCP or UDP connection
- Send and display CAN data

Choose the tile:

1. Go to 'Device View'. Double click on the blank area, a window opens to select the tile.
2. Enter a name for the tile (e.g. CAN Monitor) in the field
3. Choose the folder 'tools' and select 'CAN Monitor'



Setup the CAN monitor

1. Go to the tab 'State View' and then select 'view all details' on the tile of the CAN monitor
2. Select the source. The options are
 - UDP connection
 - TCP connection (client or server)
 - read from file
3. Depending on the source, enter the required parameters.

